

## SX-15



A sharp surveillance display for security environments that demand durability and long-term performance, but where space is at a premium.

The SX-15 is a highly durable 15" display that is perfect for tight quarters. In multi-user security environments, a strong metal casing and NeoV™ Optical Glass protect the display from day-to-day use and other incidental damage. The SX-15 also provides important features such as looping video inputs for multiple connections, Anti-Burn-in™ technology, Mask Mode and a quick signal-switching time that are essential for security and surveillance environments.

- > NeoV™ Optical Glass
- > Distinctive bezel design and durable metal casing
- > Anti-Burn-in™ technology to prevent image sticking
- > Mask Mode to reduce image distortion
- > Quick signal-switching time ( $\leq 0.8$  sec.)
- > Real-time image display with no time lag
- > Automatic recovery of video settings after power interruptions
- > Video looping output supports auto termination
- > Supports NTSC/PAL/SECAM video systems
- > Auto-adjustment when VGA input is selected
- > Kensington® security socket
- > VESA standard wall mount



NeoV™ Optical Glass - The most trusted hard glass protection available.  
Only on AG Neovo displays

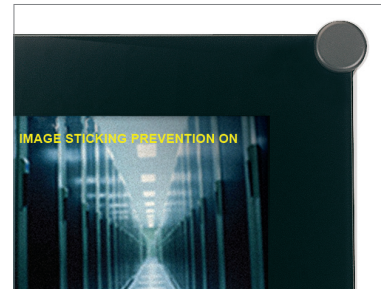


# SX-15

Specifications		SX-15
Panel	Panel Type	TFT LCD
	Panel Size	15.0" (381 mm)
	Max. Resolution	XGA 1024 x 768
	Pixel Pitch	0.297 mm
	Brightness	320 cd/m <sup>2</sup> (Typical)
	Contrast Ratio	500:1 (Typical)
	Viewing Angle (H/V)	140°/125° (Typical)
	Display Colour	16.7M
	Response Time	4 ms (GTG)
	Panel Life Time	50,000 hrs (Minimum)
Frequency (H/V)		H: 30 kHz - 60 kHz V: 56 Hz - 75 Hz
Max. Pixel Clock		80 MHz
Input	Analogue	15-Pin D-Sub
	Digital	24-Pin DVI-D
	BNC Security	BNC Connector
Input Signal	Analogue	RGB H.V Sync
	Digital	TMD5
	Composite	NTSC/PAL/SECAM
Output Connector	BNC Security	BNC Connector
Power	AC-DC Adaptor	External
	Power	AC 100 - 240 V, 50 - 60 Hz
	Consumption	< 36 W (On) < 2 W (Off)
NeoV™ Optical Glass	Thickness	3.0 mm (0.18")
	Reflection Rate	< 1%
	Transmission Rate	> 96%
	Hardness	> 6H (MOH's Rating)
Plug & Play	VESA	DCC 2B, DCC/CI
Operating Conditions	Temperature	0 °C ~ 40 °C
	Humidity	10% ~ 90%
Storage Conditions	Temperature	-20 °C ~ +60 °C
	Humidity	5% ~ 95%
Mounting	VESA FPM PMI	Yes (100 mm)
Tilt	Tilt	0° ~ +20°
Dimensions	Product (W x H x D)	380 x 359 x 155 mm (15.0" x 14.1" x 6.1")
	Packaging (W x H x D)	445 x 477 x 217 mm (17.5" x 18.8" x 8.5")
Weight	Product Weight	4.8 kg ( 10.6 lbs)
	Packaged Product Weight	7.0 kg (15.4 lbs)
Regulation Approval	Certifications & Compliance	UL/CUL,TUV/Baurt, CB,GOST-R, FCC, CE, BSMI, WEEE, RoHS, Vista/Basic, Energy Star
Accessories	Supplied	Quick Guide, CD ROM (user manual and drivers), power cord, power adaptor, 15-Pin D-Sub cable, 24-Pin DVI-D cable, CVBS BNC connector cable



NeoV™ Optical Glass for hard glass protection and strong metal casing for secure mounting



Anti-Burn-in™ technology prevents image sticking



Specifically designed and tested for commercial video security applications



Looping BNC video connector for multiple display connections